

Photometric Report

MAC Encore Two – Medium

MARTIN PROFESSIONAL R&D OPTICAL LABORATORY

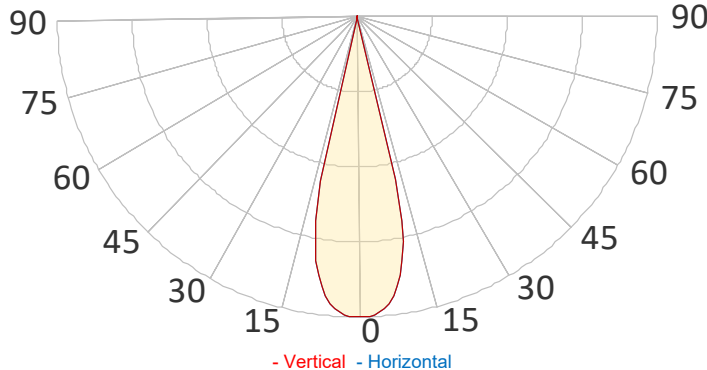
GENERAL SPECIFICATIONS

Total Fixture Output:	21000 lm
Light Engine Output:	57000 lm
Efficacy:	24.4 lm/W
Lens Option:	N/A
Beam Angle (50%):	5.1-51.9°
Field Angle (10%):	5.7-53.6°
Cut-off Angle (3%):	5.9-53.9°
CRI:	90 (+/-3)
TM-30 Rf:	90 (+/-3)
TM-30 Rg:	100 (+/-3)
TLCI:	90 (+/-3)
Color Temperature:	5600K (+/-300K)



SAMPLE MEASUREMENT

POLAR PLOT

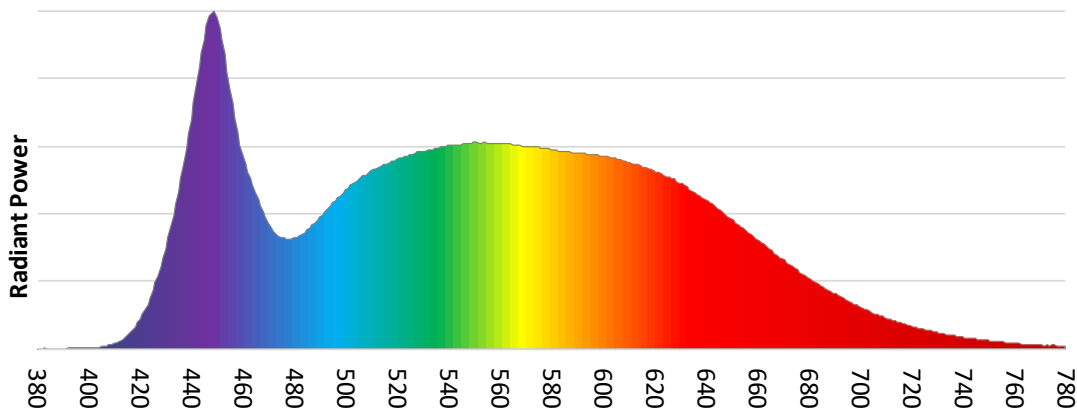


Catalog Number:	MAR-90250600HU
Measured Output:	20319 lm
Measured Peak:	147779 cd cd
Consumed Power:	855 W
Efficacy:	23.8 lm/W

Beam Angle (50%):	25.6°
Field Angle (10%):	27.6°
Cut-off Angle (3%):	27.9°

Measurement Condition:	
Ambient Temperature:	25° +/- 5° C
AC Supply:	230V/50Hz
Fan Mode:	Regulated High
Fixture Warm-up Time:	30 minutes

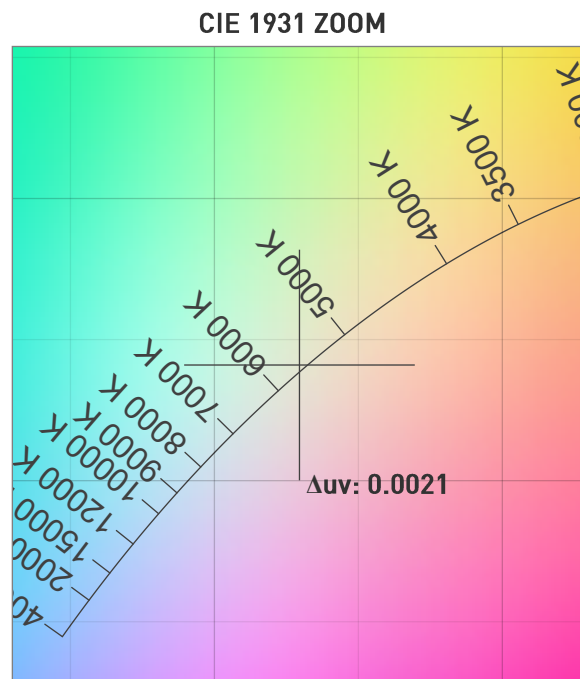
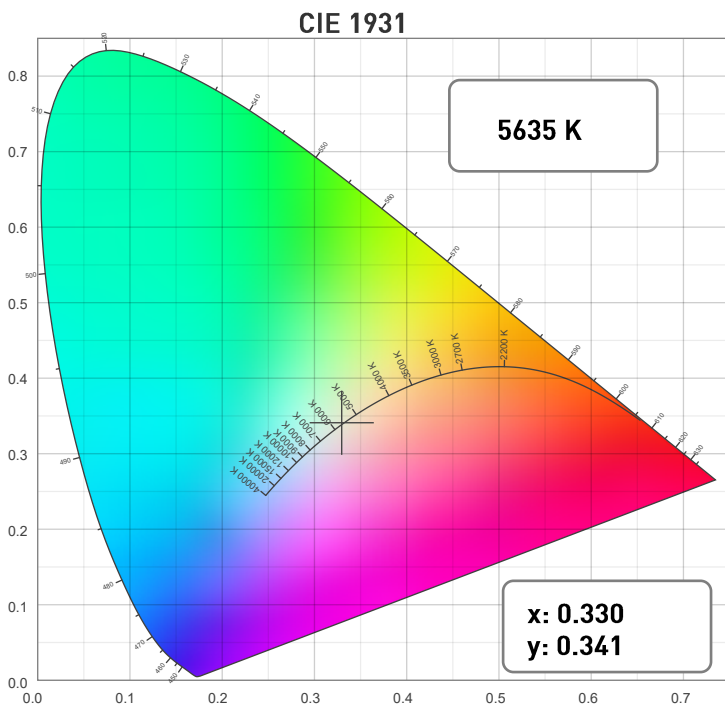
SPECTRAL DISTRIBUTION



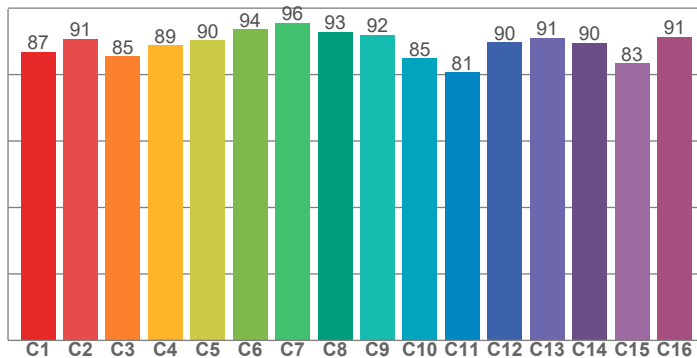
Photometric Report

MAC Encore Two – Medium

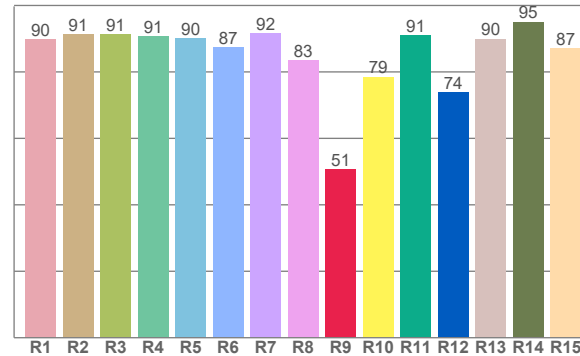
CHROMATICITY



TM30: 88.9



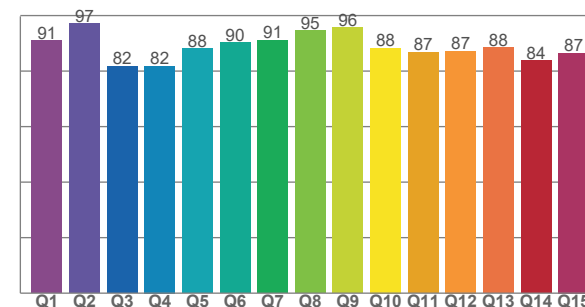
CRI: 89.4 (R1-R8)



COLOR PARAMETERS

Color Temperature	Color Rendering Index	Red Component	Color Fidelity	Color Gamut
CCT	CRI	CRI R9	TM30 Rf	TM30 Rg
5635 K	89.4	50.7	88.9	99.9

CQS: 88.0



Television Lighting Consistency Index	Color Quality Scale	Color Coordinate CIE 1931	Color Coordinate CIE 1931	Color Coordinate CIE 1964	Color Coordinate CIE 1964	Color Deviation from Black Body
TLCI	CQS	x	y	u	v	Δuv
91	88.0	0.330	0.341	0.205	0.318	0.0021

MAC Encore Two – Medium

TM30

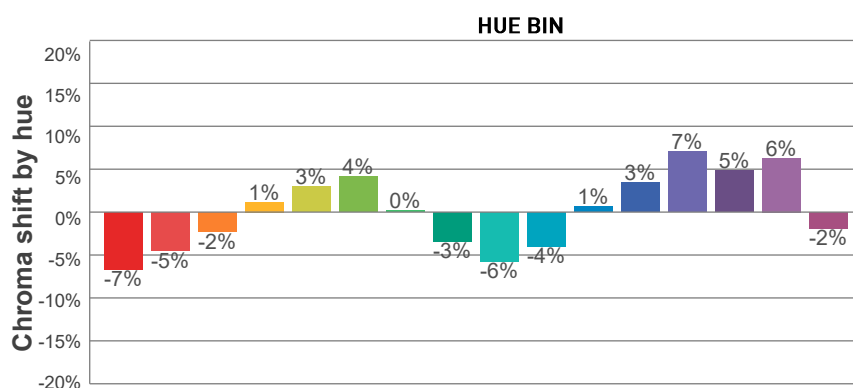
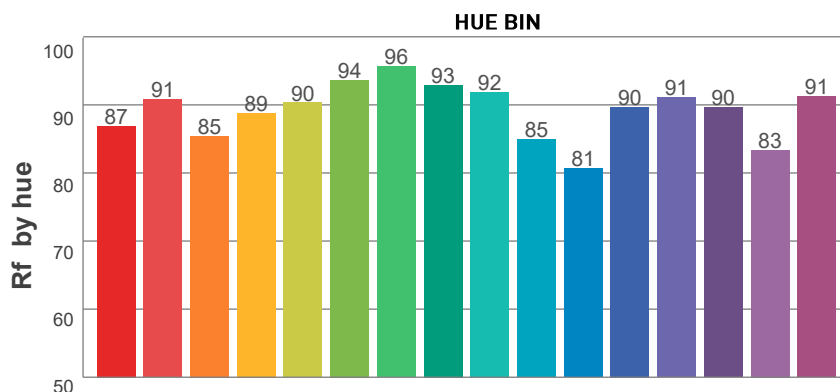
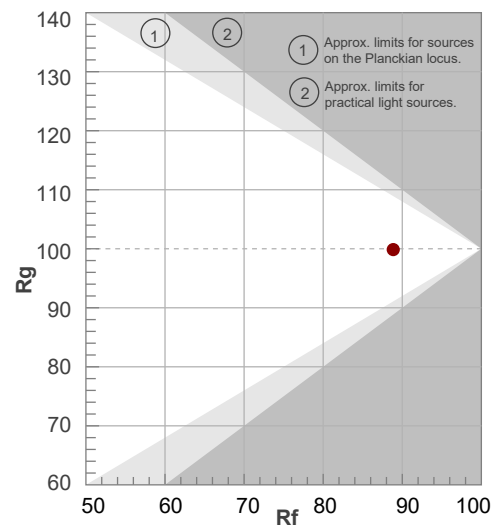
Rf 88.9

Fidelity index Rf

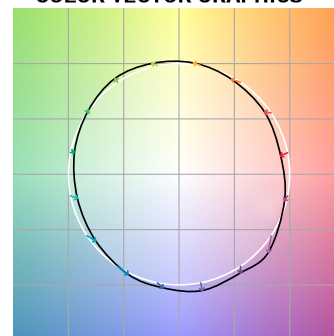
Rg 99.9

Gamut index Rg

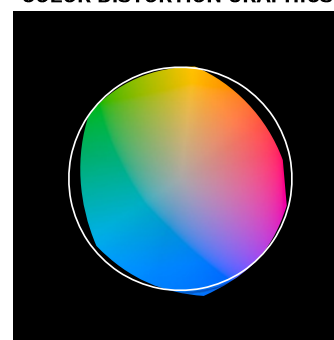
		Graphic shifts (%)	
Hue Bin	R_f	Chroma	Hue
1	87	-7%	-2%
2	91	-5%	4%
3	85	-2%	8%
4	89	1%	7%
5	90	3%	4%
6	94	4%	0%
7	96	0%	-3%
8	93	-3%	-2%
9	92	-6%	3%
10	85	-4%	8%
11	81	1%	12%
12	90	3%	6%
13	91	7%	0%
14	90	5%	-3%
15	83	6%	-14%
16	91	-2%	-5%



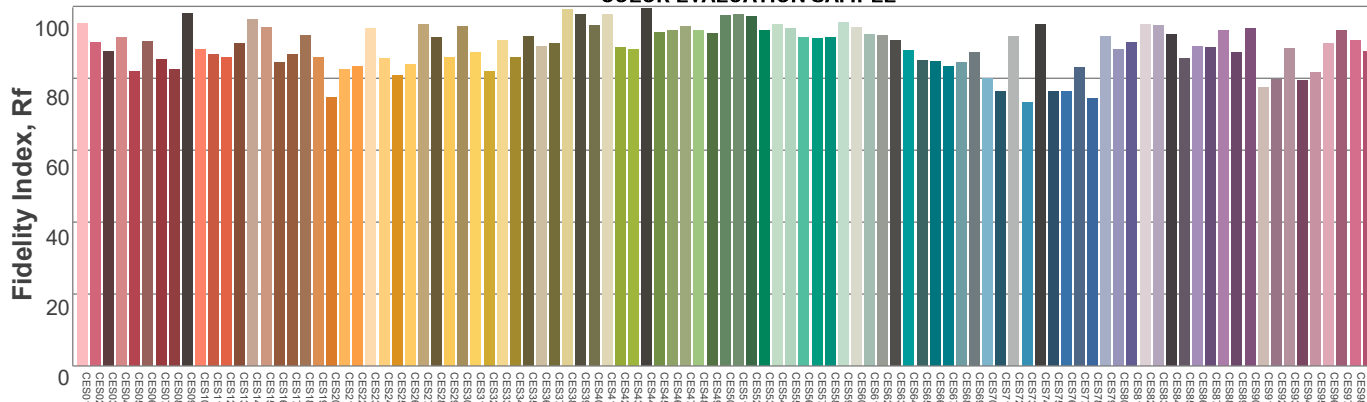
COLOR VECTOR GRAPHICS



COLOR DISTORTION GRAPHICS



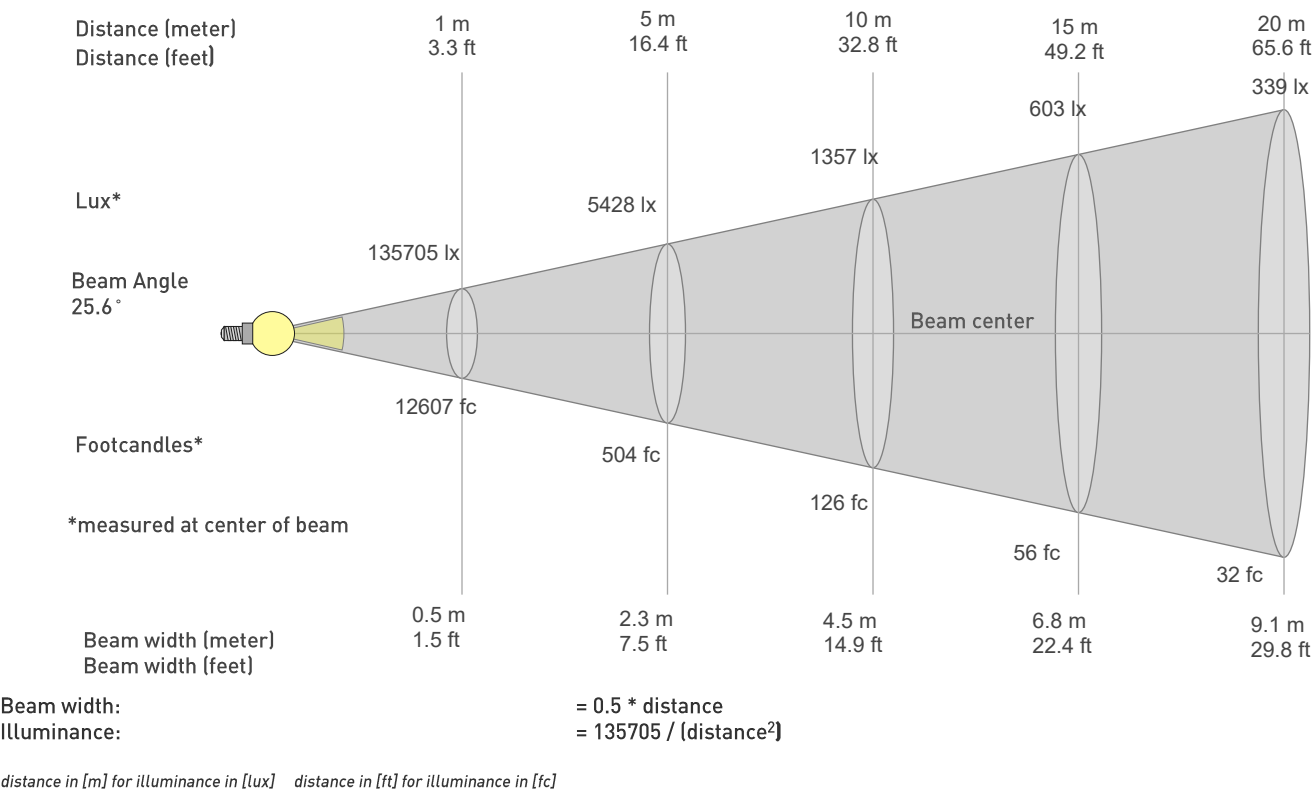
COLOR EVALUATION SAMPLE



Photometric Report

MAC Encore Two – Medium

BEAM DETAILS



BEAM ILLUMINANCE FROM 1-20M

1m	2m	3m	4m	5m	6m	7m	8m	9m	10m	11m	12m	13m	14m	15m	16m	17m	18m	19m	20m
3.3ft	6.6ft	9.8ft	13.1ft	16.4ft	19.7ft	23ft	26.2ft	29.5ft	32.8ft	36.1ft	39.4ft	42.7ft	45.9ft	49.2ft	52.5ft	55.8ft	59.1ft	62.3ft	65.6ft
135705lx	33926lx	15078lx	8482lx	5428lx	3770lx	2769lx	2120lx	1675lx	1357lx	1122lx	942lx	803lx	692lx	603lx	530lx	470lx	419lx	376lx	339lx
12607.4fc	3151.8fc	1400.8fc	788fc	504.3fc	350.2fc	257.3fc	197fc	155.6fc	126.1fc	104.2fc	87.6fc	74.6fc	64.3fc	56fc	49.2fc	43.6fc	38.9fc	34.9fc	31.5fc

